

Stinger Desktop 2

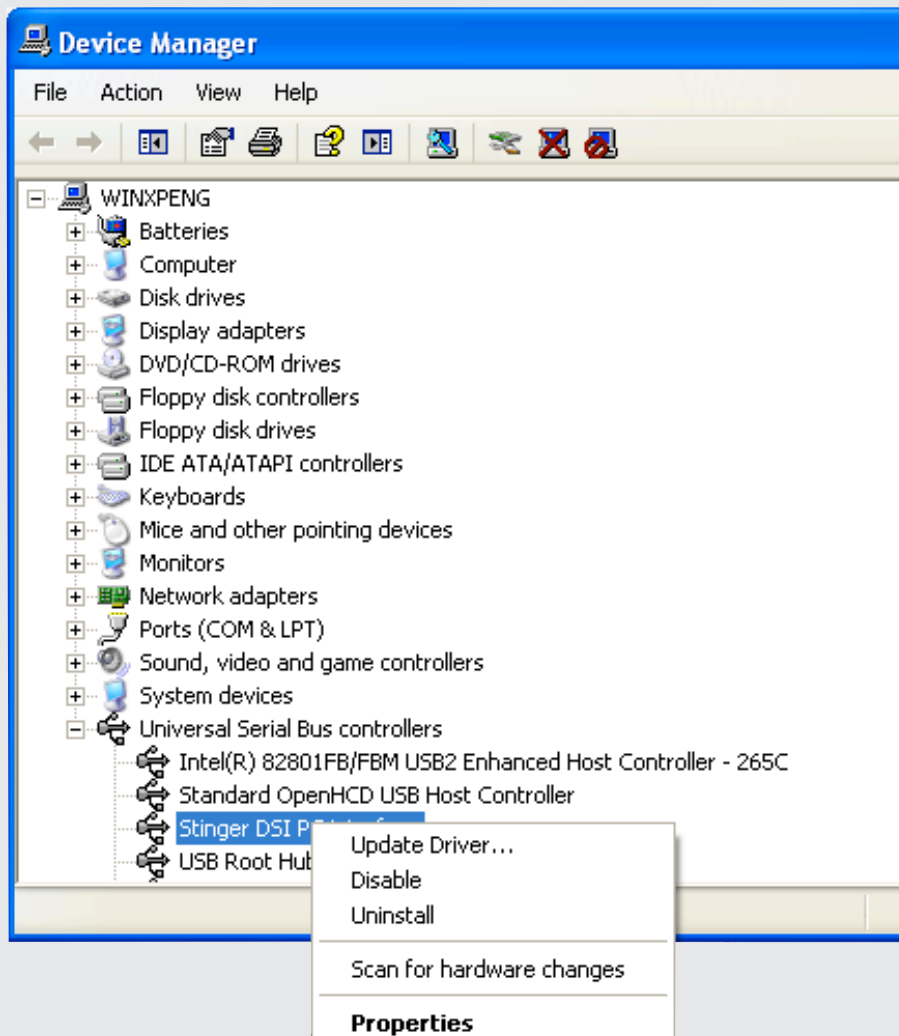
Driver Installation for Windows XP

Your computer uses so-called 'drivers' to communicate with peripheral devices. Unfortunately, on Windows PC's it is possible that after it has been installed, the driver for the Stinger PC-Interface will not be automatically updated. This usually occurs only if the older driver has been updated manually.

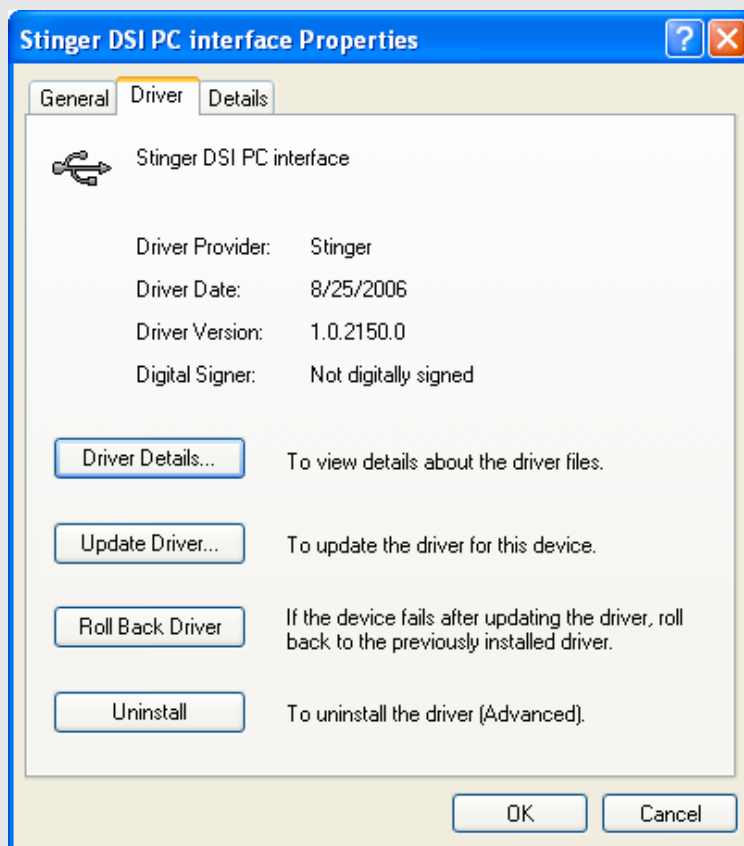
With the installation of the PC Interface driver (software that is needed for your computer to recognize the PC Interface) it can be possible that the driver will not be automatically updated. This can happen if the older driver is manually updated.

You can (still) perform the update of the driver with the following steps:

1. Please make sure that the Stinger Desktop 2 application has been installed.
2. Go to the Start menu in the left bottom corner of your screen and choose the Control Panel.
3. Click on System (Classic view should be turned on).
4. Click on the 'Hardware' tab and in the screen that appears choose 'Device Manager'.
5. Click the + symbol directly in front of 'USB-controllers'. Right click on 'Stinger DSI PC Interface' and click on 'Properties'.



6. Click on the tab 'Driver'. The following window will appear:

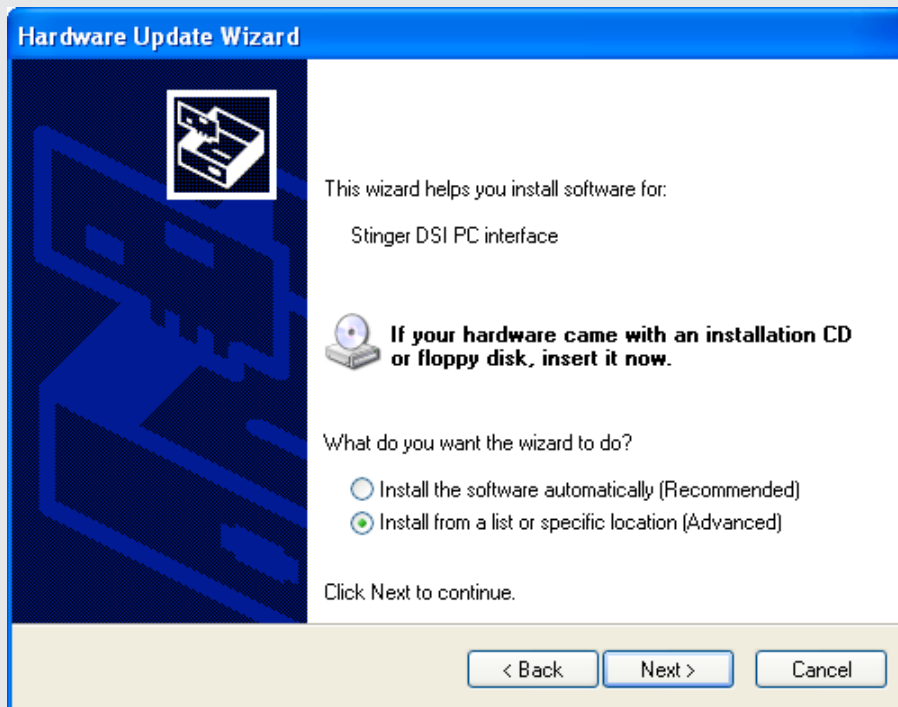


7. Click on 'Update Driver..'. The 'Hardware Updates Wizard' appears.

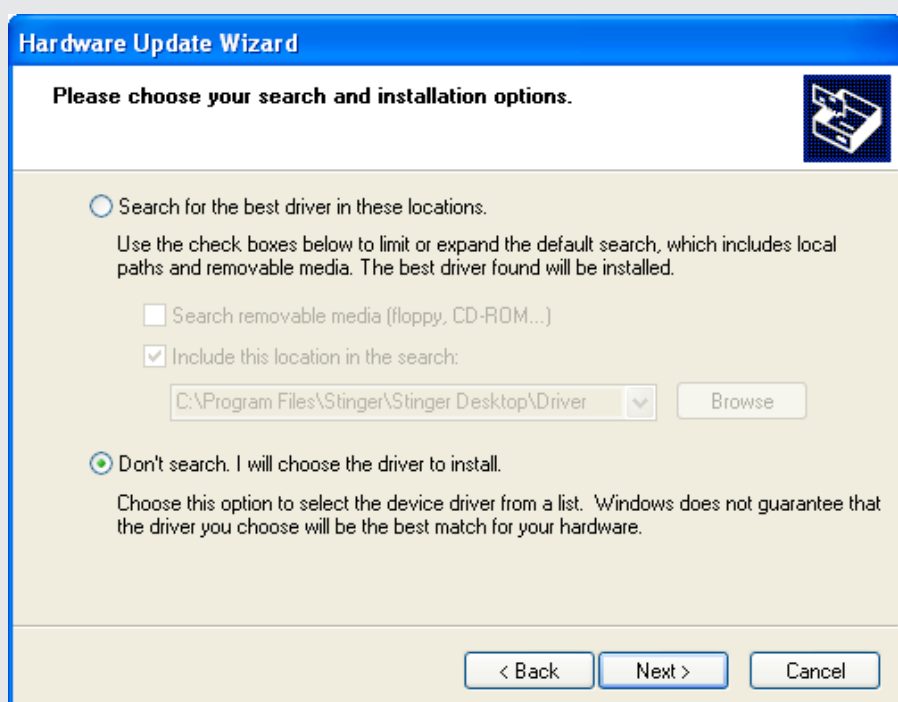
8. If you see the window below, make sure to select "No, not this time" and click on 'Next'. If you don't see this window, go directly to step 9.



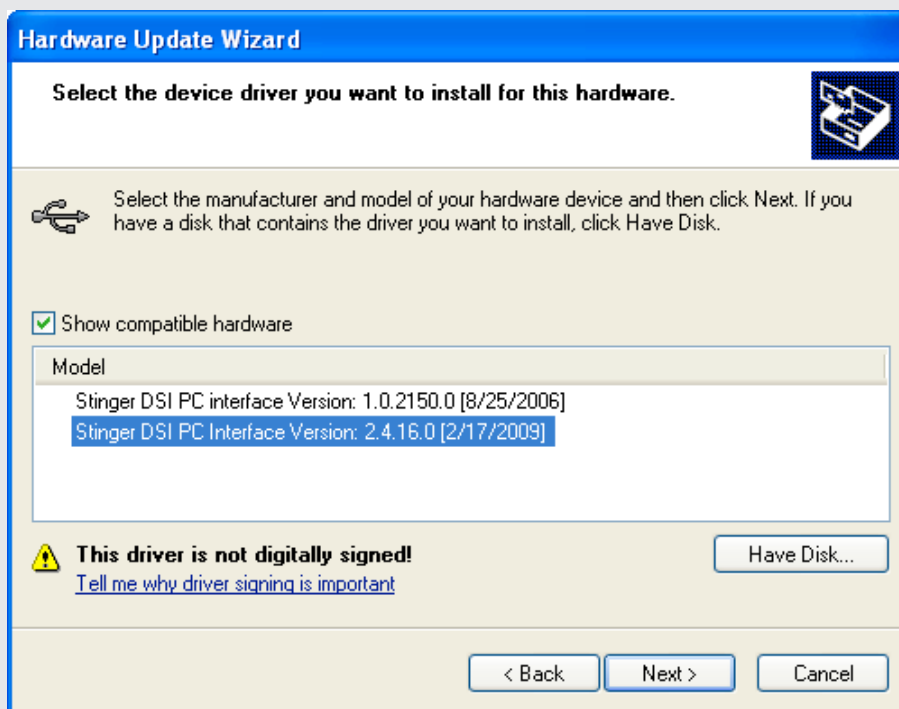
9. Select “Install from a list or specific location (Advanced)” and click on ‘Next’.



10. Select the option “Don’t search. I will choose the driver to Install” and click on ‘Next’.



11. Select the most recent driver '2.4.x' version of the 'Stinger DSI PC Interface' or 'Stinger Card PC-Interface' as shown in the example below and click 'Next'. Do not select the older '1.0.x' version!



Note: If the driver version 2.4.x is not listed, click on 'Have disk..' and go to the 'Program Files' folder on your harddrive. Click on the 'Stinger' program folder (C:\Program Files\Stinger\Desktop). Here you will find the 'Driver' folder which you will have to select before pressing 'Next'. The 2.4.x driver version will now display in the list.

12. Click on 'Continue Anyway' in the next window that appears.

13. The driver has now been successfully updated.

If you have any questions after reading this manual, please contact your local Stinger distributor or contact the Stinger tech support at telephone number: +31 (0) 252 - 41 80 95. Our tech support department speaks Dutch and English.